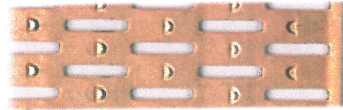
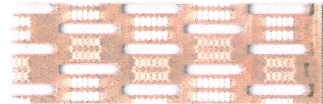


TUBULAR M-TYPE CORE

This M-Type core is manufactured with 1/2" tubes on 1/2" centers. Our welded tubes are available in .006" or .010". Closer rows of tubes and louvered copper fins provide maximum cooling for any given frontal area.



Louvered



Multi-Louvered

Fins Per Inch: 6,8,9,10,11

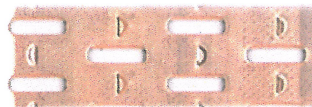
Core Depth	Rows of Tubes
1 5/16	2
1 7/8	3
2 9/16	4
3	5
3 9/16	6
4 1/8	7
4 11/16	8
5 1/4	9

Available in copper

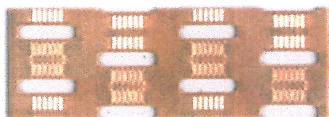
TUBULAR T-TYPE AND L-TYPE CORES

Maine's quality T-Type and L-Type (inline) cores are designed primarily for truck and commercial applications. Our 1/2" welded tubes survives burst tests up to 750 psi. The tubes are staggered on 1/2" centers. Our unique manufacturing process allows you to alter specifications and still have quick delivery.

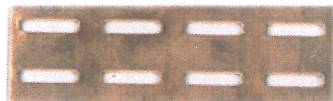
T-Type and L-Type core capabilities are as follows:



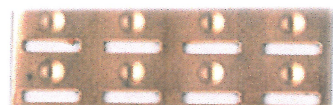
Louvered



Multi-Louvered



Inline



Inline with stiffening dimples

Fins Per Inch: 6,8,9,10,11

Brass Headers: .040, .064, (16ga), and .125 (1/8")

Reinforcement Plates: .040, .064, and .125" thickness top and bottom, front and rear, or full corner.

Note: All cores are made with corner reinforcements.

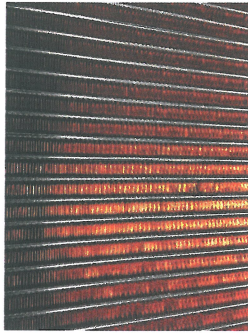
Tubes: .006" (standard), .010 (heavy duty), .018" seamless copper tubing used in silver soldered units.

Core Depth	Rows of Tubes
1 1/2	2
* 2 1/4	3
* 3	4
* 3 3/4	5
* 4 1/2	6
* 5 1/4	7
* 6	8

Available in copper or steel fin

TUBULAR FT-TYPE CORE

Our FT-Type core is used in most passenger car and light truck applications. Our multi-louvered fin gives you maximum cooling efficiency. This core is constructed with 1/2" tubes on 9/16" centers and offers fin density from 10 to 16 fins per inch.

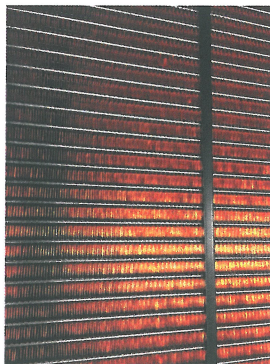


Core Depth	Rows of Tubes
1 1/4	2
2	3
2 5/8	4
* 3 1/4	5
* 4	6

*Made in two sections

TUBULAR GT-TYPE CORE

Our new GT-Type core is specifically engineered to meet or exceed the demands of today's high-tech automobiles. This computer designed multi-louvered fin offers density from 10 to 16 fins per inch. Our 1/2" tubes on 7/16" centers, are engineered to provide a greater flow area. This helps resist clogging and allows for better fin to tube bond for improved heat transfer and long life.

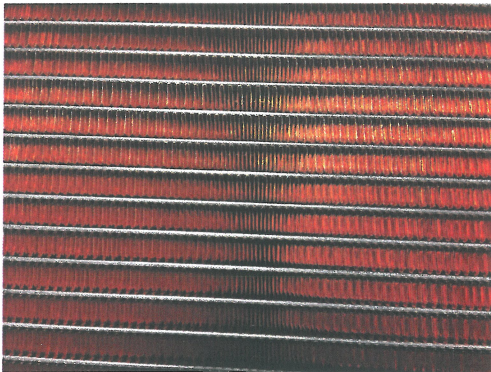


Core Depth	Rows of Tubes
1 1/4	2
2	3
2 5/8	4
* 3 1/4	5
* 4	6

*Made in two sections

TUBULAR XT-TYPE CORE

Our XT-Type core is specifically engineered to meet or exceed the demands of today's high-tech automobiles. This computer designed multi-louvered fin offers density from 12 to 18 fins per inch. Our 5/8" tubes, located on 7/16" centers, are engineered to provide a greater flow area. This helps resist clogging and allows for better fin to tube bond for improved heat transfer and long life.



Core Depth	Rows of Tubes
1 1/2	2
2 1/4	3
* 3	4
* 3 3/4	5
* 4 1/2	6
*Made in two sections	

CELLULAR TYPE CORES

Our Cellular Type cores and heater blocks are fabricated from heavy gauge, silver bearing copper water channels and fins. This allows for greater heat transfer and longevity. A smooth double-lockseam water channel guarantees a strong tank to solder bond. All assemblies are pressure tested at the factory, therefore eliminating leaks.

V-Cell Type with 1/2" Fin Centers

Core Depth	Rows of Channels	Core Depth	Rows of Channels
2	2	3	3
2 1/4	2	3 1/4	3
2 1/2	2	3 1/2	3
2 3/4	2	3 3/4	3

CH-Type with 3/8" Fin Centers

Core Depth	Rows of Channels
2	2
2 1/2	2